

MOTOSim EG-VRC

Powerful Simulation Software

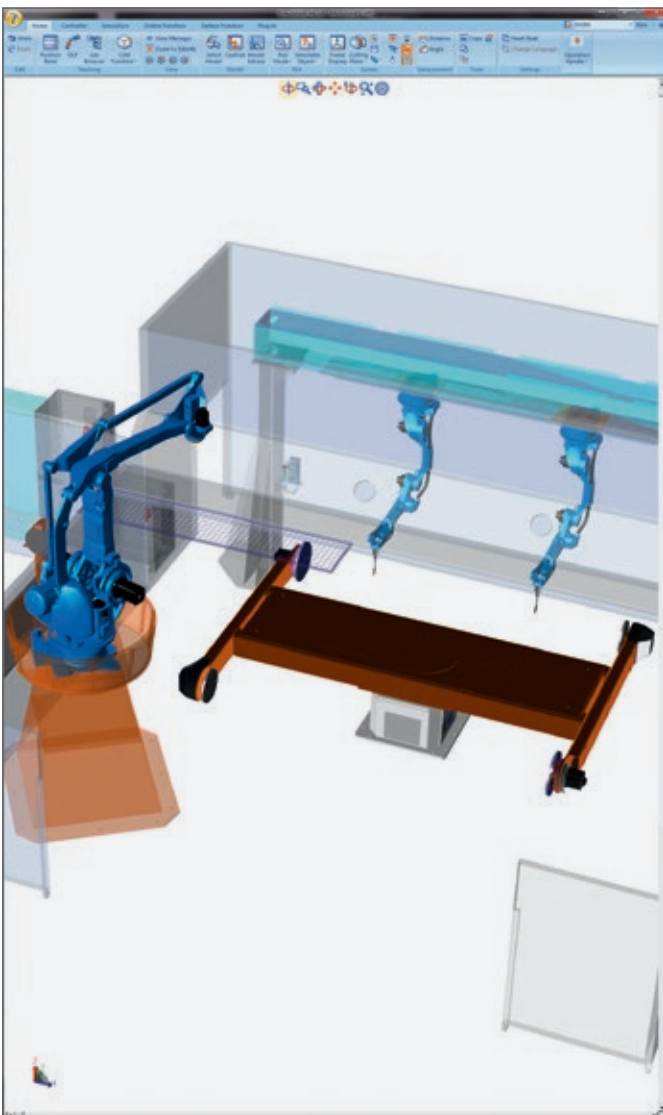
Offline Programming, 3D Simulation,
Virtual Robot Control

KEY BENEFITS

- Offline programming of complex systems
- Minimisation of setup, non-productive and commissioning times
- Advanced control functions and simulation of the YASKAWA product family, including robots, gantries, tracks and positioners

FURTHER FEATURES

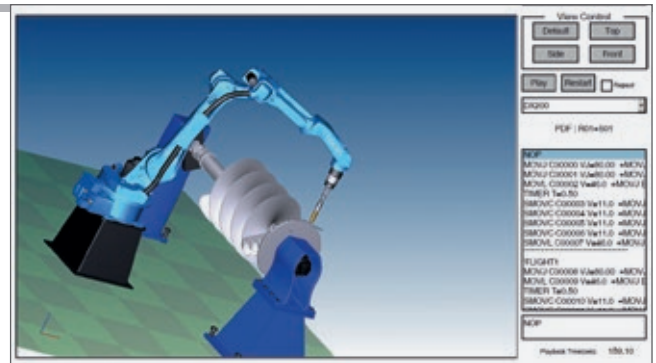
- Comprehensive tool of the digital factory with simulation functions, such as collision detection, reach analysis and cycle time calculation
- Supports numerous process applications, such as arc welding, spot welding, cutting, handling, painting
- Visualisation of the real teach pendant from generation NX100 onwards
- Supports the INFORM programming language
- Complete simulation of the robot software in the PC environment
- Creation of system configurations equivalent to the real controller
- Offline programs can be transferred to the real controller without the need for compilation
- Optimisation of existing robot programs without interrupting production
- Visualisation and calculation of the real robot paths
- Various measurement and analytical tools
- Simple integration of user models into the available YASKAWA model library
- Supports multi-robot and multi-controller simulations
- Control of robots and external axes including synchronous robot motion
- Supported import formats: IGES, STEP, Inventor, ProE/Creo, Solidworks, Catia V5, SAT, Parasolid, HSF, HMF, STL, 3DS, RWX, DXF, WRML and PLY



Important Functions:

3D-PDF

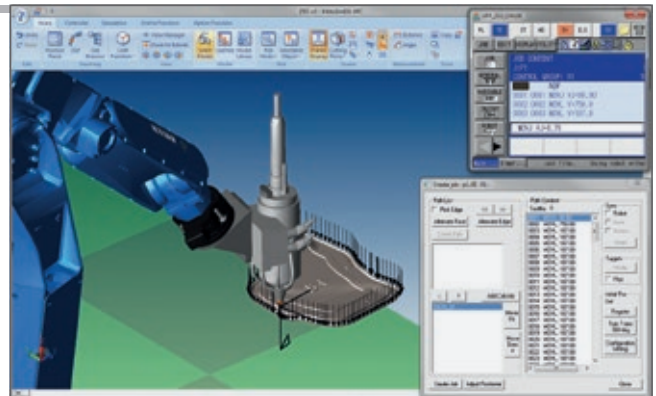
- Simple exporting of simulation result as 3D PDF or AVI file
- Visualisation of the robot layout



3D view file (please open with Firefox or InternetExplorer)
<http://www.motoman.com/motomedia/MotoSimFile3D.pdf>

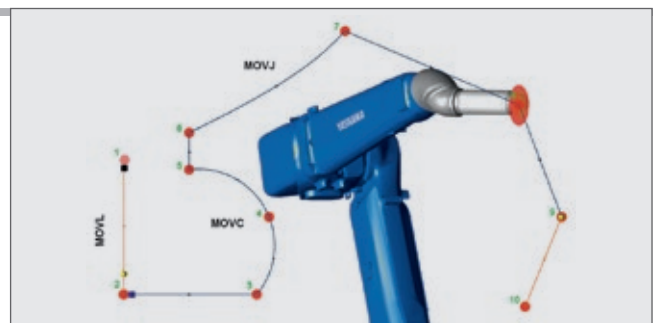
CAD/CAM

- Automatic path generation on the basis of component surfaces or edges
- Setting of user-defined application parameters
- Generation of complete robot programs
- Jobs can be adapted to changed component positions with minimal effort



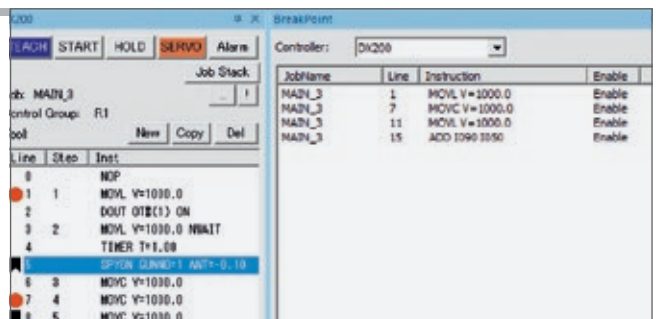
Visual Path

- Visualisation of the theoretical robot motion (without approximate positioning)
- Points can be shifted or added easily
- Visualisation of different instructions (e.g. TIMER, DOUT, Anticipation, etc.)



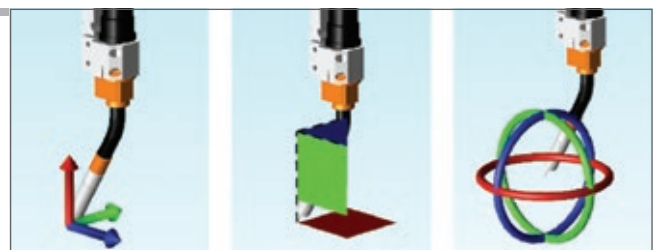
Debug Function

- Creation of breakpoints (points at which the program is stopped)
- Creation of bookmarks (highlighting of important positions in programs)
- Debug monitor (important variables and inputs/outputs can be monitored)



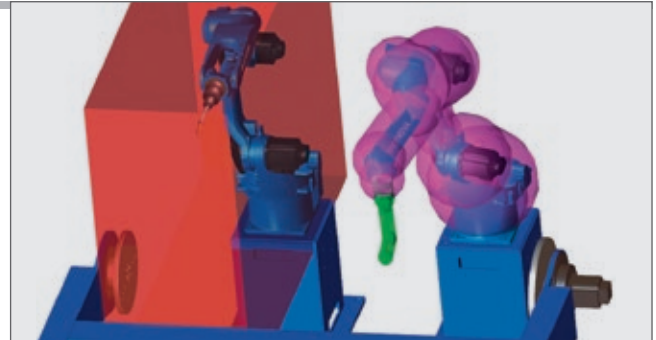
Handle Display

- Modification of the robot position or movement of individual robot axes by dragging with the mouse



Functional Safety Unit

- Visualisation of the monitored areas
- Optical check of the FSU settings/parameters



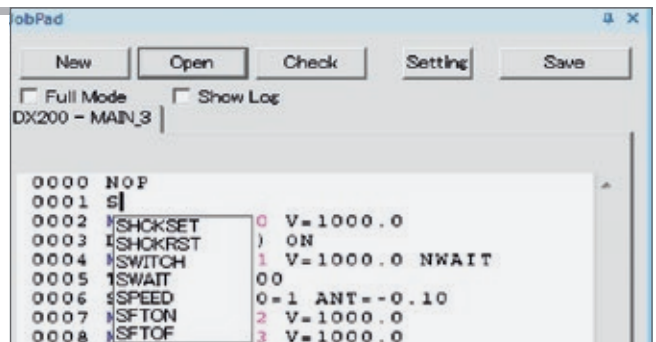
Search Function (wire search)

- Creation/pre-programming of the search programs
- Complete support of all instructions required for the search function



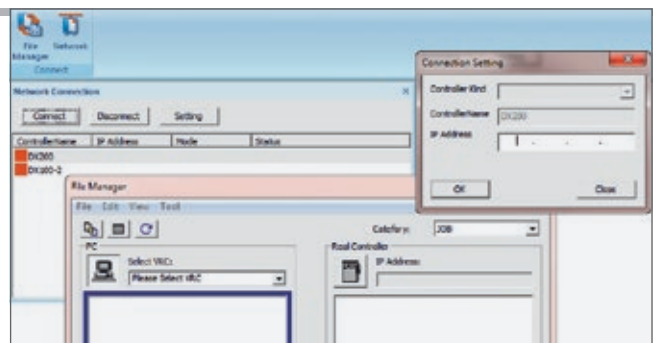
JobPad

- Writing of jobs with the aid of an optimised text editor
- Syntax check
- Drop-down menu with all enabled instructions



Network Function

- Ethernet connection to real controller
- Visualisation of robot motions in real time
- Data exchange with integrated file manager (jobs, parameters, etc.)



System Requirements (Min.)

- Microsoft Windows 11 or Microsoft Windows 10 (64bit)
- Intel Core i7 or higher
- 4 GB RAM
- NVIDIA graphics card
- 10 GB free space on the hard drive

YASKAWA GROUP

- AT Yaskawa Austria
Schwechat/Wien
+43(0)1-707-9324-15
- CZ Yaskawa Czech s.r.o.
Rudná u Prahy +420-257-941-718
- DK Yaskawa Danmark
Løsning +45 7022 2477
- ES Yaskawa Ibérica, S.L.
Viladecans/Barcelona +34-93-6303478
- FR Yaskawa France SARL
Le Bignon +33-2-40131919
- FI Yaskawa Finland Oy
Turku +358-(0)-403000600
- GB Yaskawa UK Ltd.
Newton Aycliffe +44-330-678-1990
- IT Yaskawa Italia s.r.l.
Torino +39-011-9005833
- IL Yaskawa Europe Technology Ltd.
Rosh Ha'ayin +972-3-9004114
- LVA Yaskawa Latvia
Riga +371-2-2467570
- NL Yaskawa Benelux B.V.
Eindhoven +31-40-2895500
- PL Yaskawa Polska Sp. z o.o.
Wrocław +48-71-7928670
- SE Yaskawa Nordic AB
Torsås +46-480-417-800
- SI Yaskawa Slovenia
Ribnica +386-1-8372-410
- TR Yaskawa Turkey Elektrik
Ticaret Ltd. Sti.
İstanbul +90-216-5273450
- ZA Yaskawa Southern Africa (PTY) Ltd
Johannesburg +27-11-6083182

DISTRIBUTORS

- BG ATRI ROBOTICS Ltd.
Stara Zagora +359 899 625 160
Kammarton Bulgaria Ltd.
Sofia +359-02-926-6060
- EE RKR Seadmed OÜ
Tallinn/Estonia +372-68-35-235
- GR Gizelis Robotics
Schimatari Viotias +30-2262057199
- HU Flexman Robotics Kft
Budapest +36 1 259 0981
- LT Profibus UAB
Panevezys +370-45-518575
- NO Skala Robotech AS
Lierstranda +47-32240600
- PT ROBOPLAN Lda
Aveiro +351-234 943 900
- RO NORMANDIA S.R.L.
Braşov +40 268 549 236



Yaskawa Headquarters

Yaskawa Europe GmbH
Robotics Division
Yaskawastraße 1
85391 Allershausen, Germany
Tel. +49 (0) 8166/90-0
Fax +49 (0) 8166/90-103

Yaskawa Academy and sales office Frankfurt

Yaskawa Europe GmbH
Philipp-Reis-Straße 6
65795 Hattersheim am Main, Germany
Tel. +49 (0) 6196/77725-0
Fax +49 (0) 6196/77725-39

All drawing dimensions in mm.
Technical data may be subject to change without previous notice.
Please request detailed drawings at robotics@yaskawa.eu.

MOTOSim EG-VRC
C-05-2023, A-No. 178956